

LEVY FAST FACTS

Gahanna-Jefferson Public Schools

**GAHANNA
STRONG**
SCHOOLS COMMUNITY

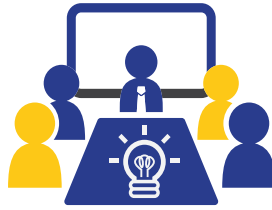


After assessing building and classroom needs across the district and working with parents, community members, school leaders, and outside experts, GJPS has developed a plan to support the future of our schools. The combined bond and operating levy on the ballot **May 8, 2018** will support this plan and allow us to maintain the strength of our schools and keep pace with rapid developments in growth, education, and technology.

THE PLAN



Build a new Lincoln Elementary on Helmbright Drive









Renovate classrooms, media centers, and student restrooms in K-8 buildings



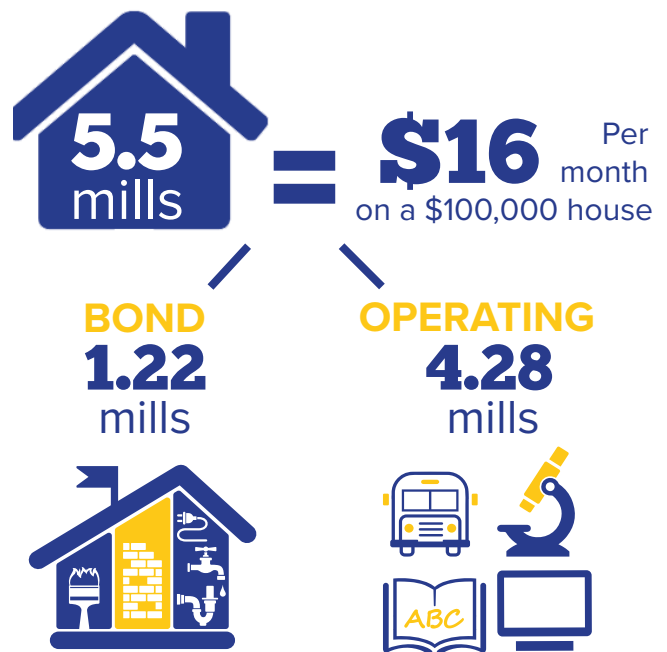
Finance a feasibility study to develop high school options for community consideration

BENEFITS OF THE PLAN

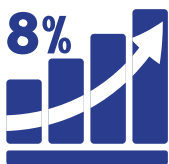
-  Maintains current programming, academic offerings, and class sizes
-  Replaces Lincoln Elementary School, which has antiquated systems and would cost less to rebuild than renovate
-  Uses the Lincoln Elementary site for future high school expansion
-  Addresses over-crowding in our elementary schools, the majority of which are at capacity
-  Modernizes classrooms in K-8 school buildings with flexible and innovative learning spaces
-  Keeps pace with student learning & technological needs

THE VOTE

COMBINED BOND & OPERATING LEVY



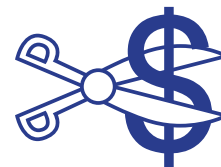
DID YOU KNOW?



In the past 5 years, student enrollment at Gahanna-Jefferson Public Schools has increased by 8%.



Gahanna-Jefferson Schools has the **THIRD** lowest rate for taxpayers in Franklin County.



In 2017 the district made \$1.3 million in reductions to extend an operating levy that passed in 2011.